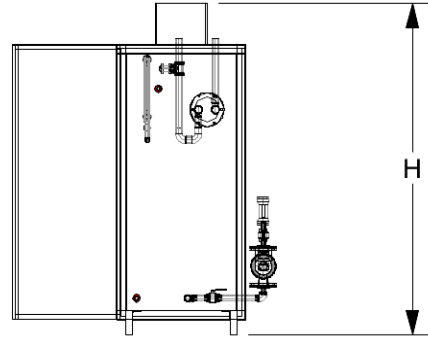
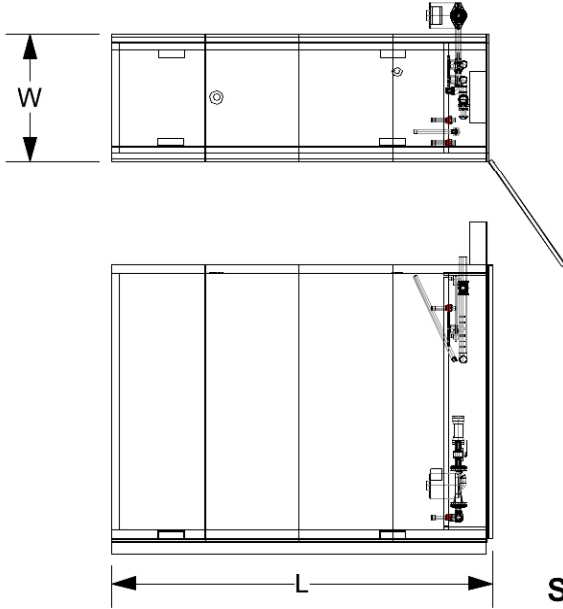


Job: \_\_\_\_\_ Engineer: \_\_\_\_\_ Contractor: \_\_\_\_\_ Rep: \_\_\_\_\_

Gallons	Exchanger (ft2)	Pump GPM	Pump Head	Controls



**Sizes & Dimensions**

Gallons	W (in)	H (in)	L (in)	Wt (lb)*
130	30	77	30	350
250	30	77	52	525
400	30	77	74	700
500	30	77	90	850

\* Approx. weight depending on exchanger.  
Does not include pumps.

**Heat Exchanger (typ)**

Area (ft2)	NPT
5	1
10	1
15	1
20	1.5

Note: All specifications subject to change for continuous improvements

**Specifications**

Tank: 10ga steel, non-pressurized with vent.  
Tank Insulation: R-15 rigid foam, R-7.5 on door, metal jacket  
Base: Treated wood base.

Heat Exchanger: potable tube side, see table

Pumps: TACO 00 or 2400 series

Controls: Goldline GL30 Delta T controller  
Optional: Badger 220 flow meter with Badger 3050-10 transmitter for Btu readings. Data can be read locally, LAN or WAN.

Electrical: Electrical service to control panel  
1Ø/110VAC, 30 Amp

Corrosion Inhibitor: Non-toxic, non-potable corrosion inhibitor prevents galvanic corrosion & oxidation.



Produced By: